

GENDER JUSTICE

in green space use in relation to
different socio-economic conditions

Rahimi, Akbar

Davatgar Khorsand, Elmira

Breuste, Jurgen

Karimzadeh, Hossain

TABRIZ, IRAN

in green space use in relation to different socio-economic conditions in Tabriz, Iran

Following the industrial revolution, cities experienced rapid urbanization.

But, urban development can only be sustainable when there is a balance between **economic**, **social**, and **environmental** development (sustainability pillars).



in green space use in relation to different socio-economic conditions in Tabriz, Iran

Green areas are essential part of urban areas and provide different ecosystem services.

Today, due to the low interaction of urban dwellers with nature, urban green spaces, especially parks, have direct or indirect role in improving the quality of life in cities.

Therefore, it is necessary that urban parks be usable by all groups of people

PHOTO: ecology.fnal.gov/



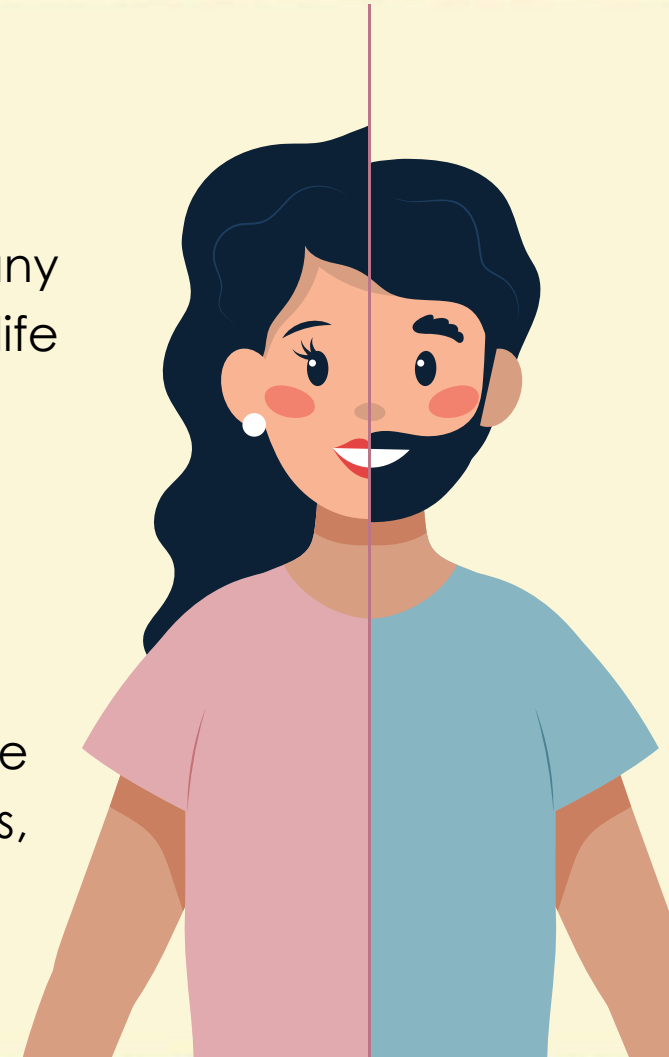
in green space use in relation to different socio-economic conditions in Tabriz, Iran

Social Justice

Social justice is a prerequisite for any action aiming at improving human life quality.

Gender Justice

equal rights of men and women in use of opportunities, access to facilities, and ...



in green space use in relation to different socio-economic conditions in Tabriz, Iran

TABRIZ CITY

photo by: Tabriz Municipality

AREA: 244.91 km²

PARK'S TOTAL SURFACE: 6.78 km² (2.7%)

POPULATION: OVER 1.7 MILLION



in green space use in relation to different socio-economic conditions in Tabriz, Iran

Socio-economic structure of Tabriz

city of Tabriz is clearly structured based on social status and divided into three social areas: low, middle and high.

These areas have been determined based on socio- economic conditions of families, land value, & population density.

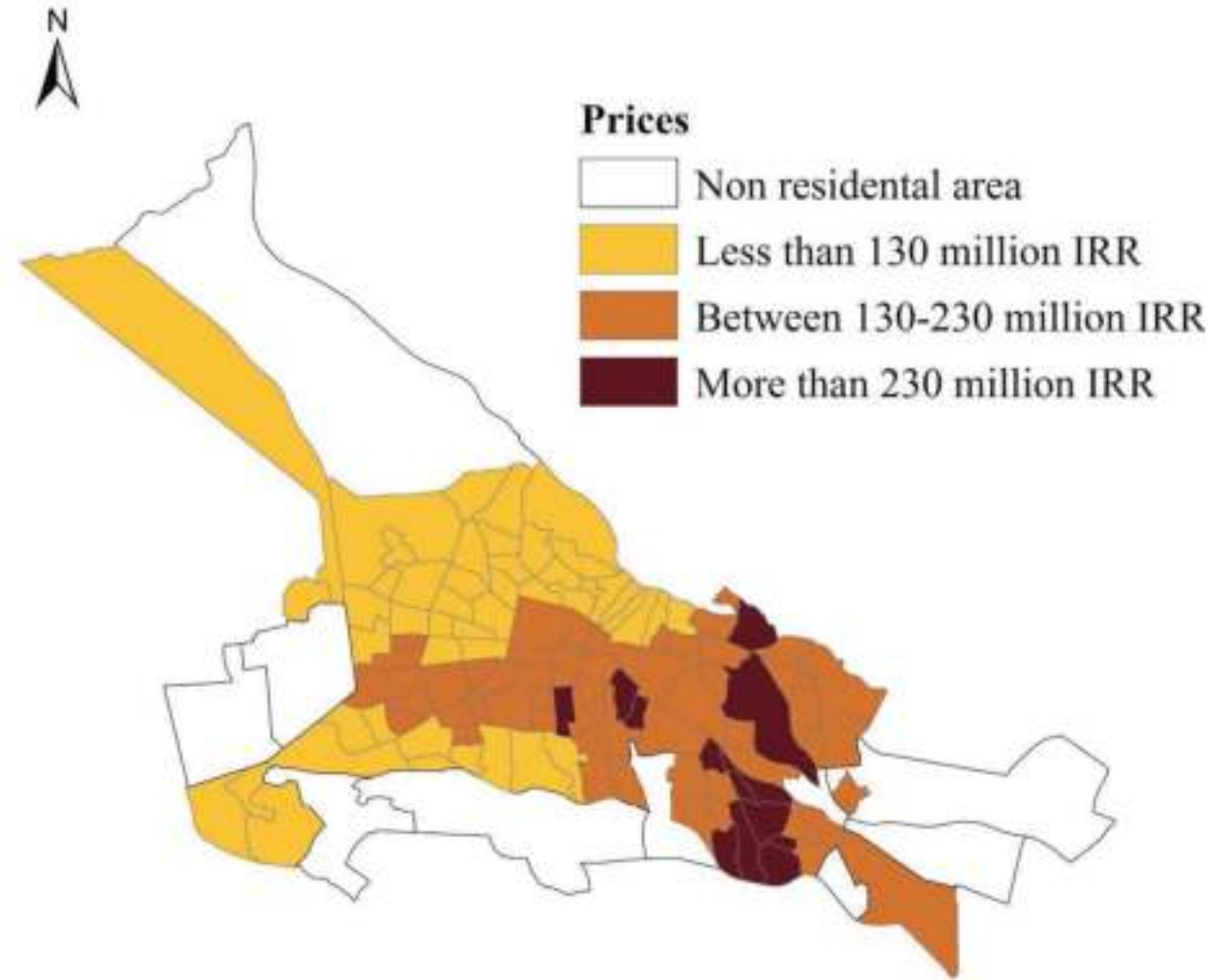


Breuste and Rahimi, 2015

in green space use in relation to different socio-economic conditions in Tabriz, Iran

UP-TO-DATING INFORMATIONS!

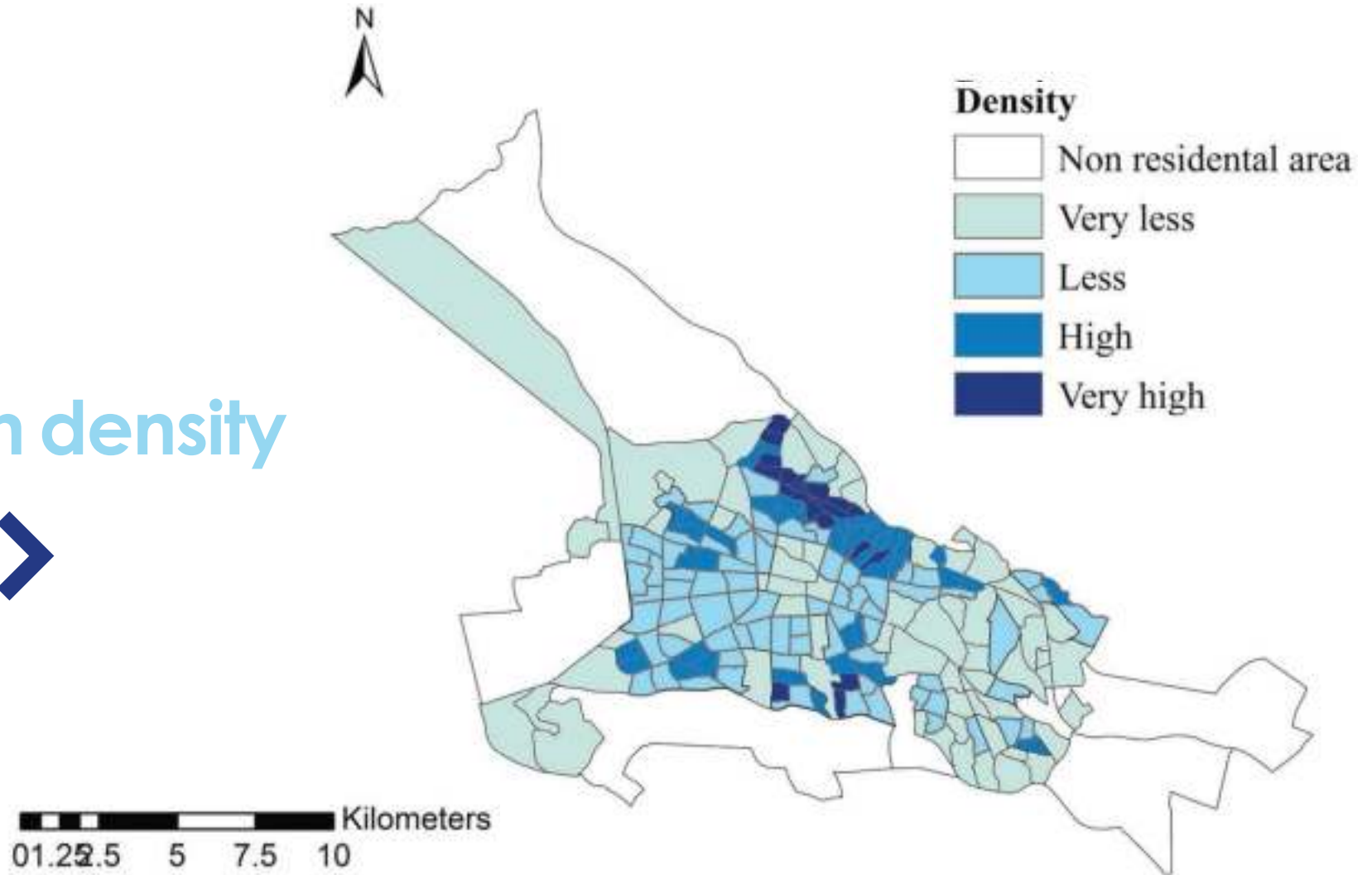
1. land value >>>>



in green space use in relation to different socio-economic conditions in Tabriz, Iran

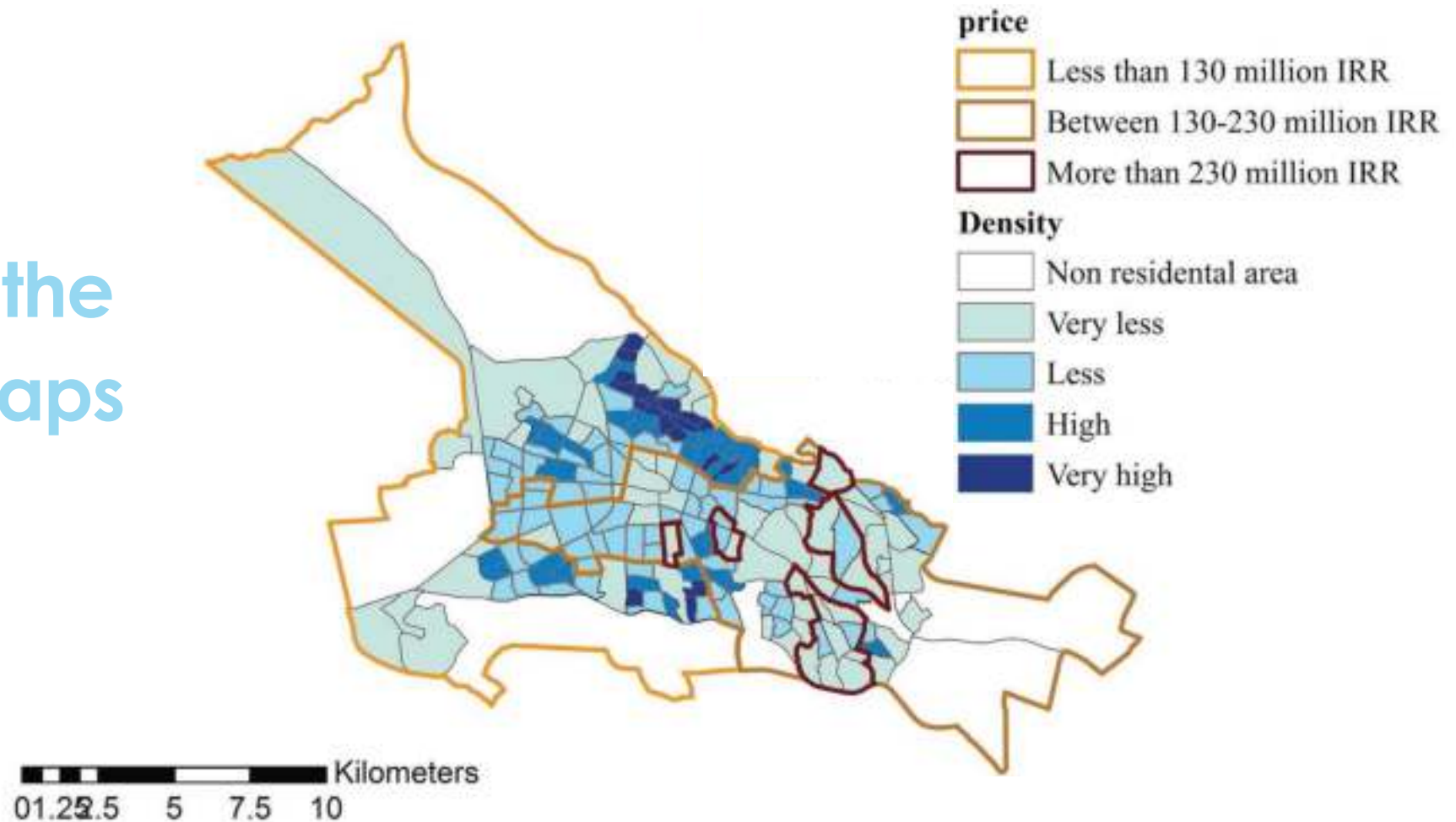
UP-TO-DATING
INFORMATIONS!

2. population density



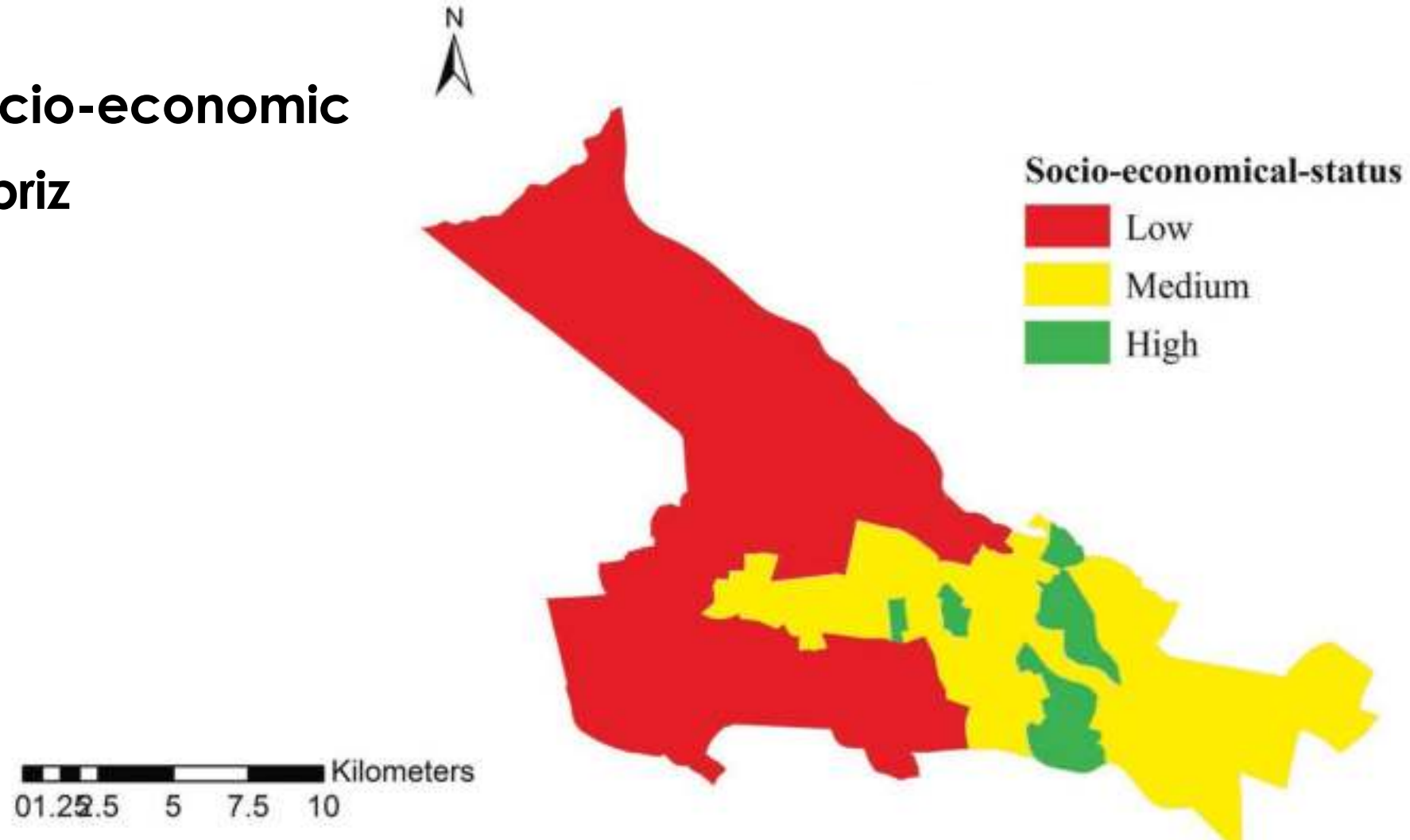
in green space use in relation to different socio-economic conditions in Tabriz, Iran

combining the updated maps



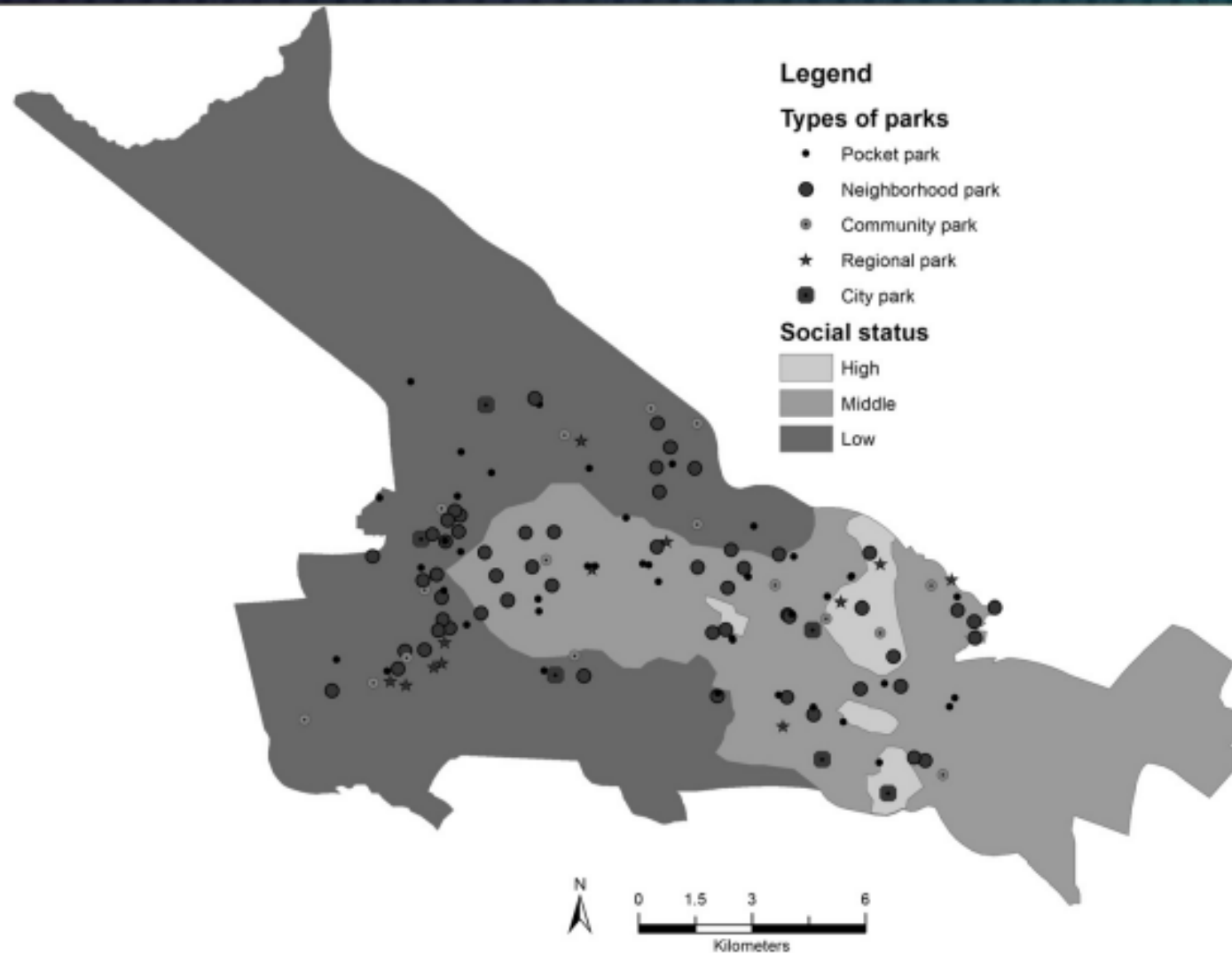
in green space use in relation to different socio-economic conditions in Tabriz, Iran

Up to date Socio-economic structure of Tabriz



in green space use in relation to different socio-economic conditions in Tabriz, Iran

Tabriz city parks



in green space use in relation to different socio-economic conditions in Tabriz, Iran

Data Collection

1. Study previous articles

2. questionnaire



5 Sections

1. personal information
2. accessibility
3. security
4. cultural condition
5. physical condition

3. Data analysis in ARC GIS software

1. Hotspot Analysis
2. Moran's Index

in green space use in relation to different socio-economic conditions in Tabriz, Iran

Questionnaires

Distribution of questionnaires

sample size: 384

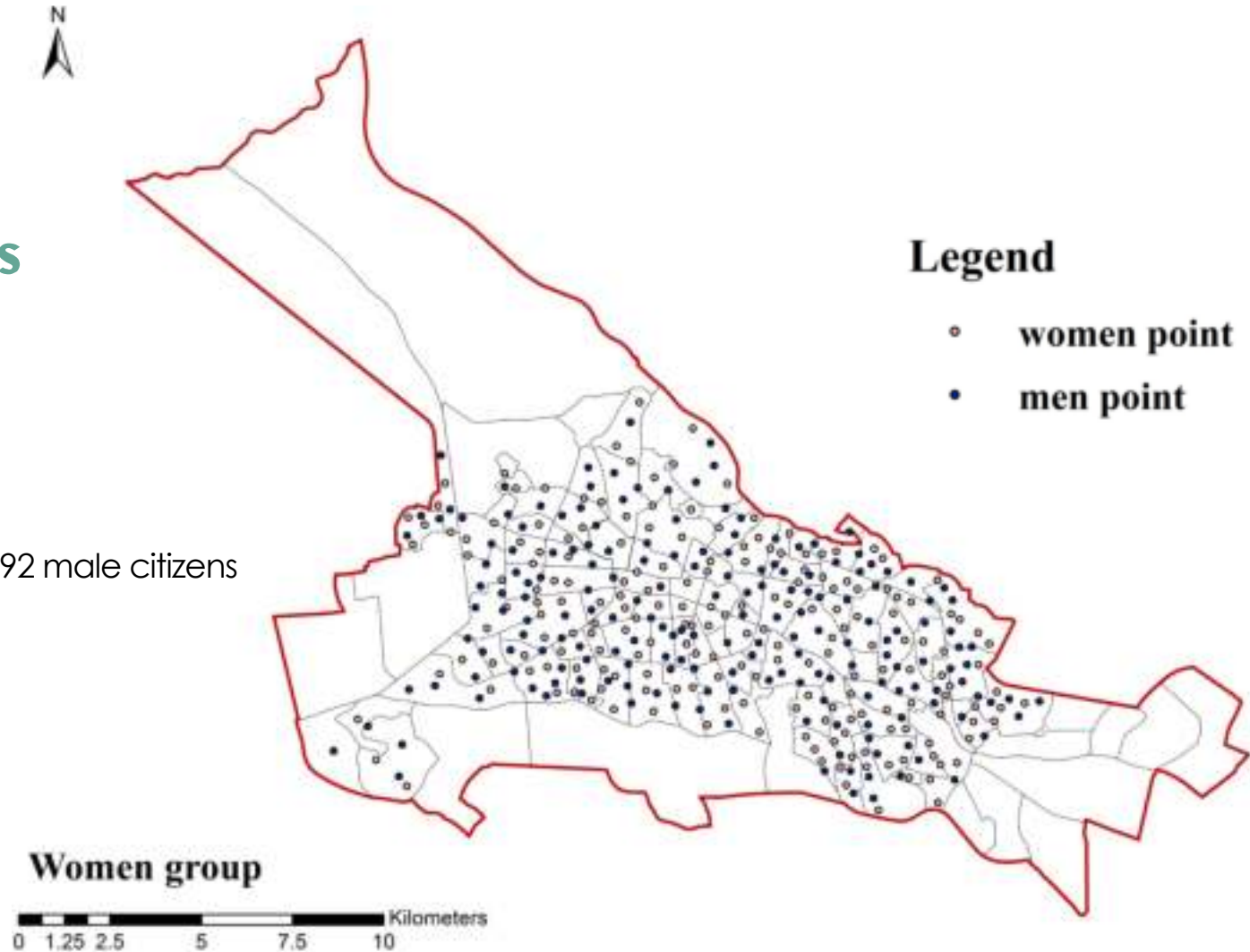
by Cochran's sampling formula

Random sampling, targeted 192 women and 192 male citizens

age 18-60

numerical reliability: 0.762

by Cronbach's alpha method



in green space use in relation to different socio-economic conditions in Tabriz, Iran

Questions (Research indicators)

Indicator	Factors	Indicator	Factors
Accessibility	Physical and infrastructure conditions of access routes to parks	Cultural factors	The presence of disturbing and delinquent people
	public transportation system		Social monitoring
	Private transportation and parking issue		Socio-cultural conditions of park visitors
	Walking and cycling paths leading to parks		Behavioral patterns of people in parks
Security	Uses around parks and access routes	Physical condition	maintains and cleanliness
	Previous experiences and park security records		under construction or abandoned buildings
	Possibility of being seen & seeing around		Visual appeal and decorative elements
	Crime and illegal activities		Equipment and amenities of the park
	Usability in night and Lighting		plants in parks (density and types)
	Perimeter control and Surveillance		access routes inside the park (path wide, material, amenities and ...)
	vandalism		Slope

in green space use in relation to different socio-economic conditions in Tabriz, Iran

RESULTS

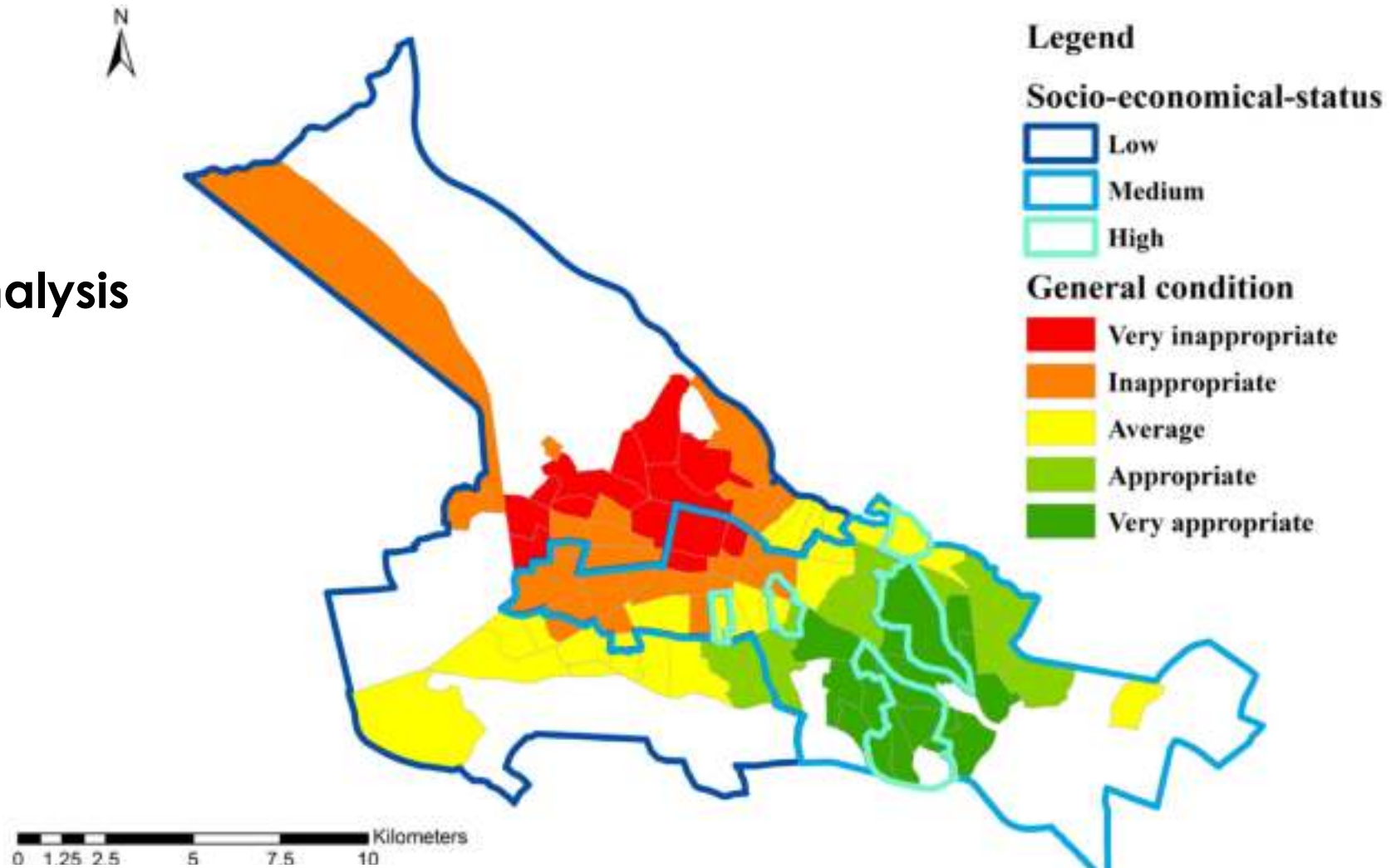
An aerial photograph of a city park in Tabriz, Iran. The park features a large, rectangular pond with several water fountains spraying upwards. The pond is surrounded by lush green trees and a paved walkway. In the background, a dense urban landscape with numerous multi-story apartment buildings and commercial structures is visible, set against a backdrop of mountains under a clear blue sky.

1. General findings about parks usage conditions ignoring gender factor
2. General findings considering gender factors

in green space use in relation to different socio-economic conditions in Tabriz, Iran

1

Hotspot Analysis

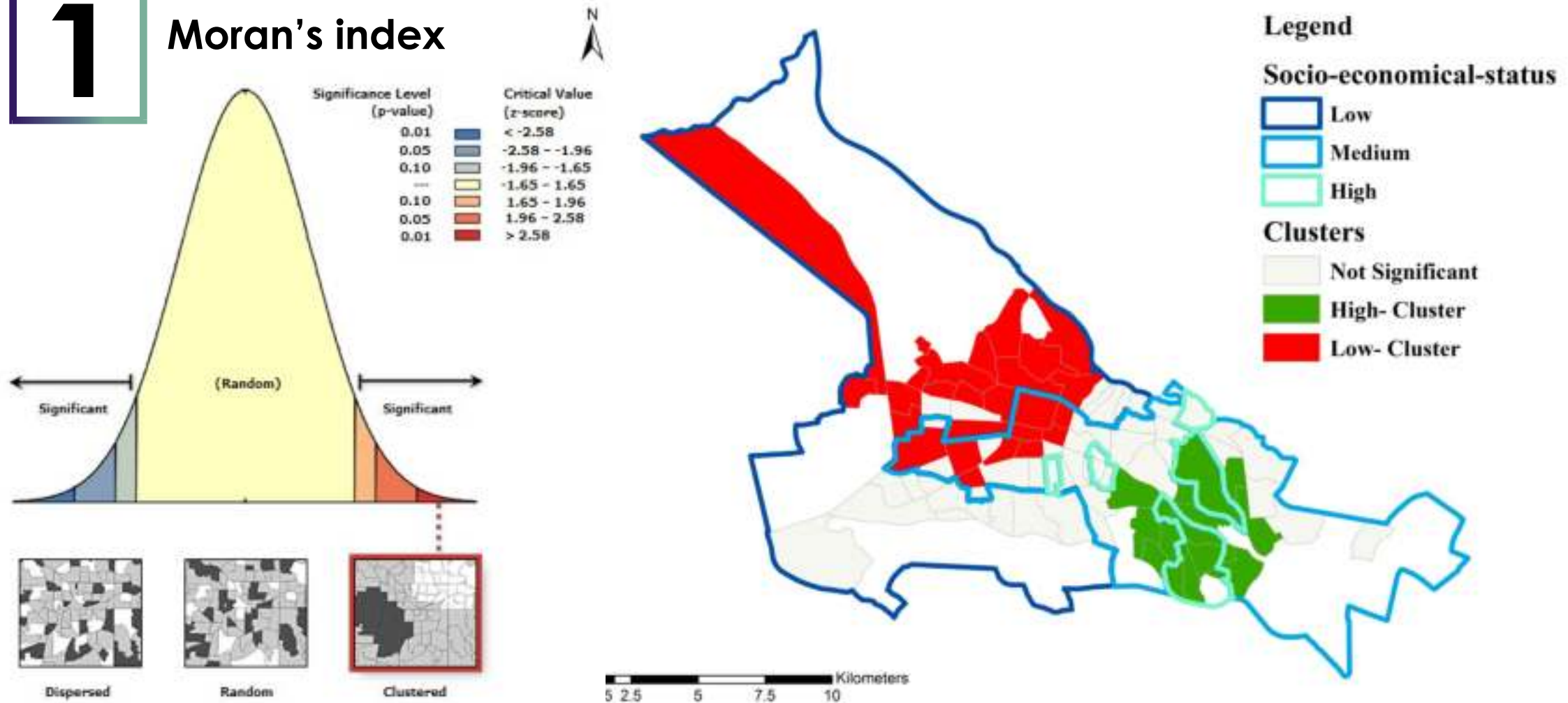


RESULTS

in green space use in relation to different socio-economic conditions in Tabriz, Iran

1

Moran's index



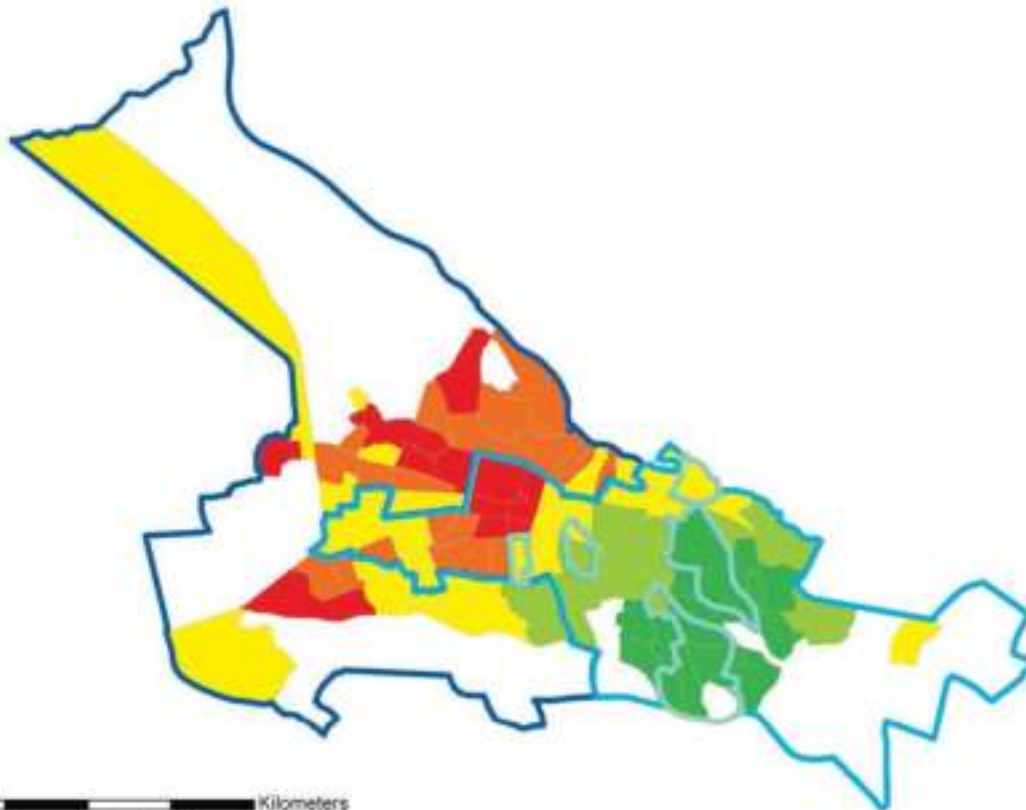
RESULTS

in green space use in relation to different socio-economic conditions in Tabriz, Iran

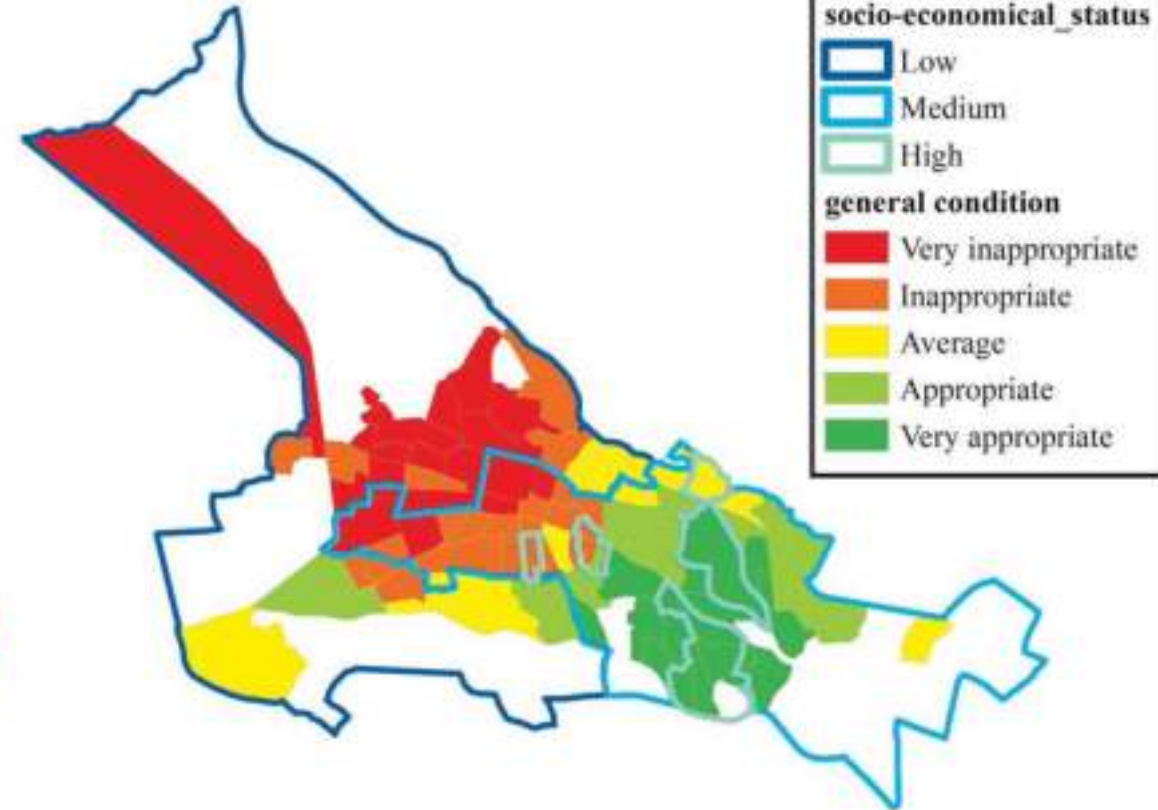
2

Hotspot Analysis

Men group



Women group

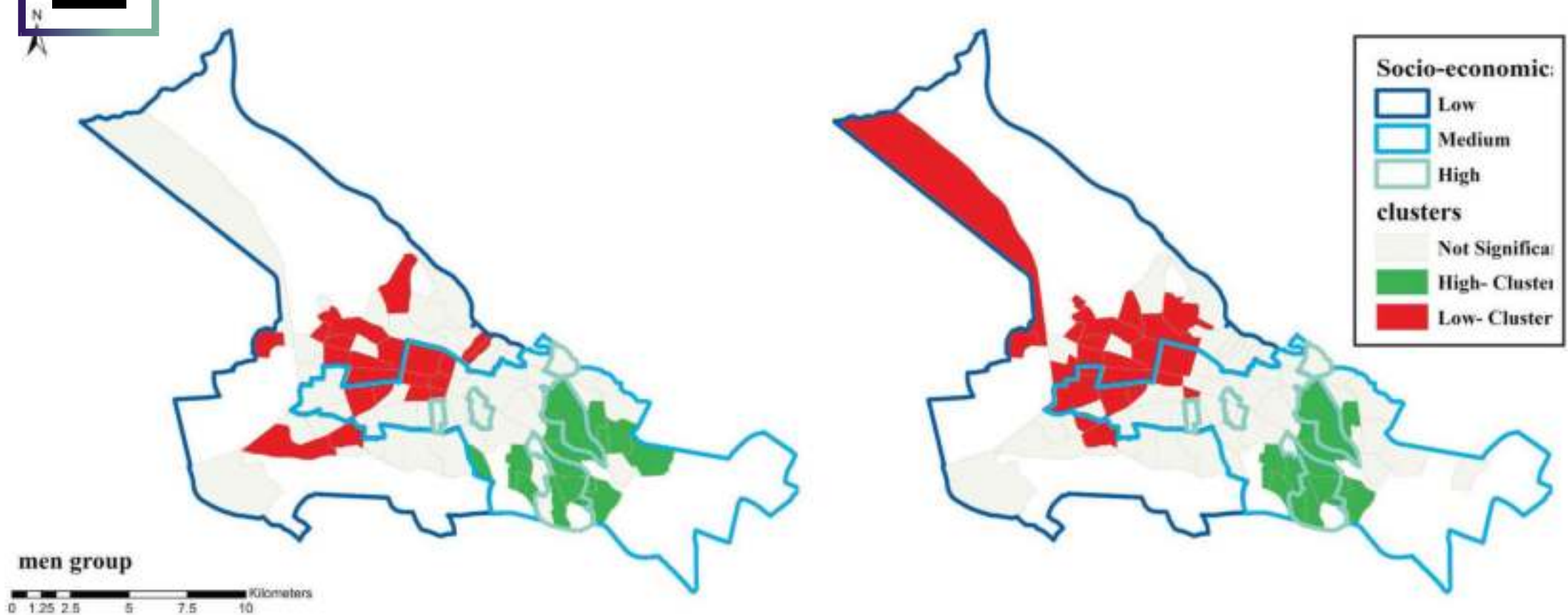


in green space use in relation to different socio-economic conditions in Tabriz, Iran

2

Moran's index

Women group



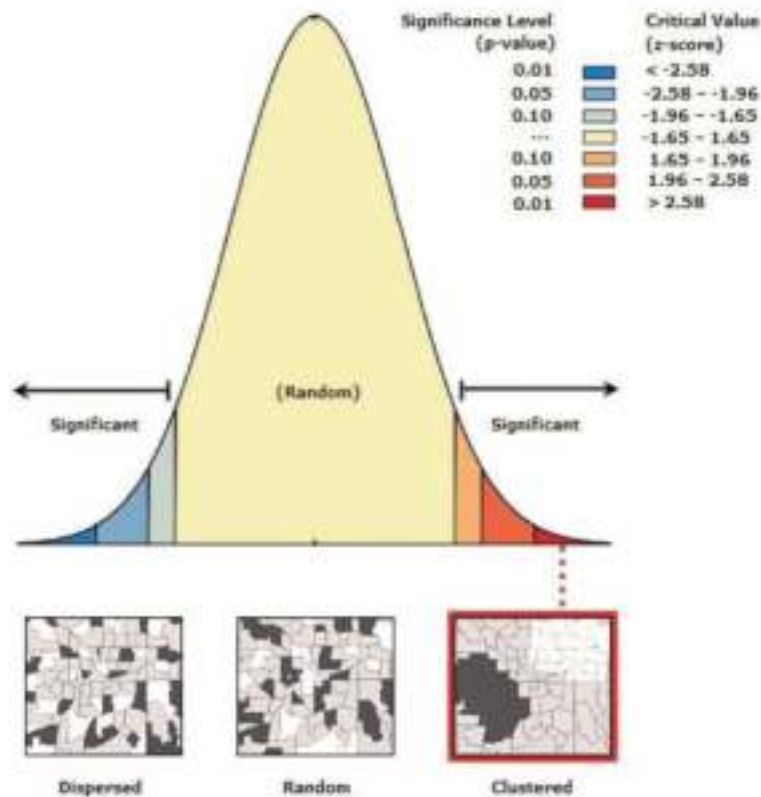
RESULTS

in green space use in relation to different socio-economic conditions in Tabriz, Iran

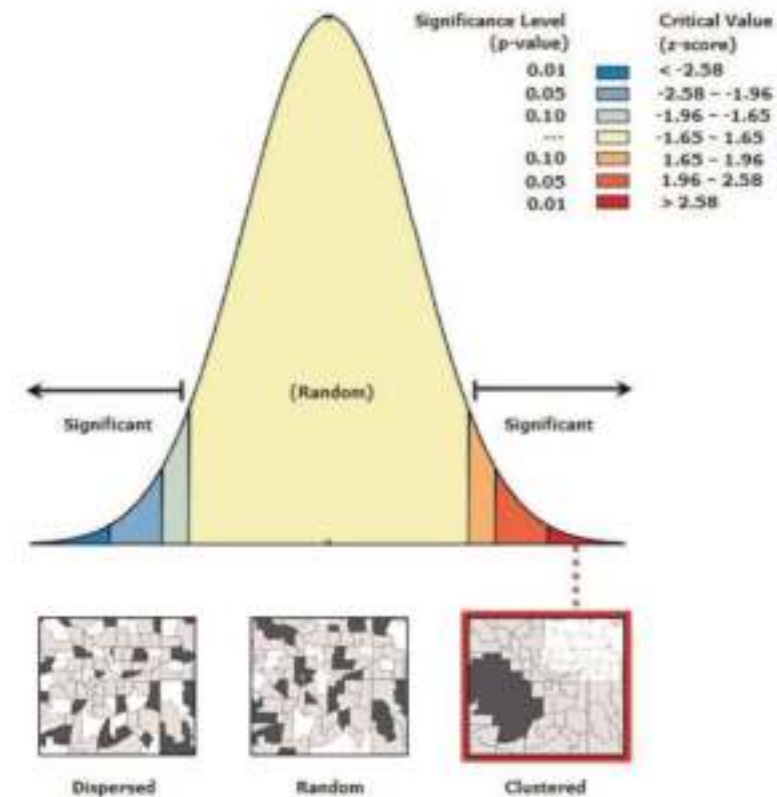
2

Moran's index

Men group



Women group



in green space use in relation to different socio-economic conditions in Tabriz, Iran

Results indicate that gender justice prevails in Tabriz when it comes to the usage of green areas. However, the degree of favorability of green space use is completely dependent on the socio-economic conditions of the localities.

There is a significant difference in the use made of urban green spaces between areas of high and areas of low socio-economic status. The favorability in areas of middle socio-economic status is a function of the location of each neighborhood; favorable conditions dominate in the vicinity of affluent areas whereas unfavorable conditions have been reported close to disadvantaged areas

RESULTS

GENDER JUSTICE

— in green space use in relation to
— different socio-economic conditions

THANKS FOR YOUR ATTENTION

in green space use in relation to different socio-economic conditions in Tabriz, Iran

photo by: mohammad-mohammadpour
www.unsplash.com



photo by: mahdi-moghaddas
www.unsplash.com



in green space use in relation to different socio-economic conditions in Tabriz, Iran

photo by: mohammad-mohammadpour
www.unsplash.com



www.pinterest.com

TARBIAT STREET - TABRIZ
PHOTO BY: NASSER RAYEGANI



in green space use in relation to different socio-economic conditions in Tabriz, Iran



photo by: mohammad-mardani
www.unsplash.com



photo by: ramín-alizadeh
www.unsplash.com

in green space use in relation to different socio-economic conditions in Tabriz, Iran



FARS

photo by: fars news
www.farsnews.ir